

10.1" HD 1080P Quad Waterproof Monitor

Operation Manual



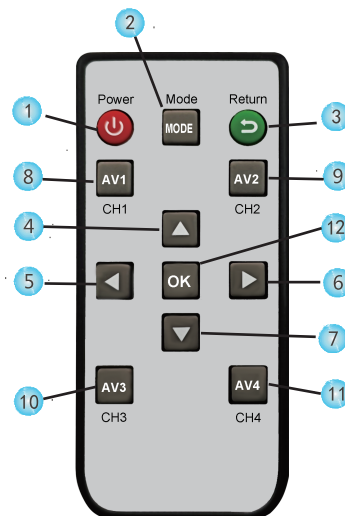
Touch Button Instruction



- ① IR Receiver
- ② Power On
- ③ Analog Decrease/AV1
- ④ Analog Increase/AV2
- ⑤ MENU
- ⑥ UP/AV3
- ⑦ Down/AV4
- ⑧ Mode Select

Remote Instruction

- ① Power On/Off
- ② Mode
- ③ Return
- ④ Up
- ⑤ Analog Decrease
- ⑥ Analog Increase
- ⑦ Down
- ⑧ CH 1 (Video)
- ⑨ CH 2 (Video)
- ⑩ CH 3 (Video)
- ⑪ CH 4 (Video)
- ⑫ Mode Select



Tech Specs

Material of Casing: Metal

Press button: Touch button

Video format: AHD/CVBS

Screen size: 10.1" IPS HD 1080P Screen

Resolution: 1024(W)*RGB*600(H)

Display ratio: 16:9

System: PAL/NTSC

Voltage: DC 9-36V

Waterproof Level:IP69K

Brightness: LED Luminance 600cd/m²

Contrast: 500:1

Power consumption: 12W

Color: black

Four Video AV input,4 trigger wires

Split modes: 13types

Adjustable image: Full /2/3/4 image

Viewing angle: L/R 85/85 U/D 85/85

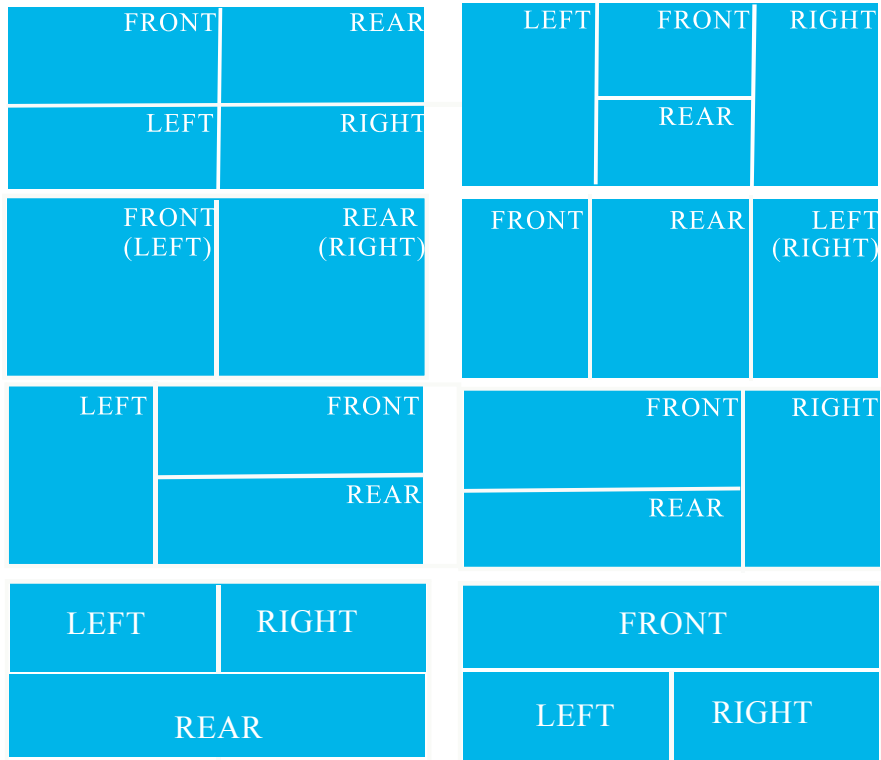
Connector: 4Pin aviation

Operating Temperature: -30℃ ~ 70℃

Mount Bracket: U Shape or plate VESA are optional

Split Mode

Press " Mode" button to select the video, it can be switched to full screen, 2 split, Triple screen and quad screen.



Accessories

Before installation, please make sure all the movies.

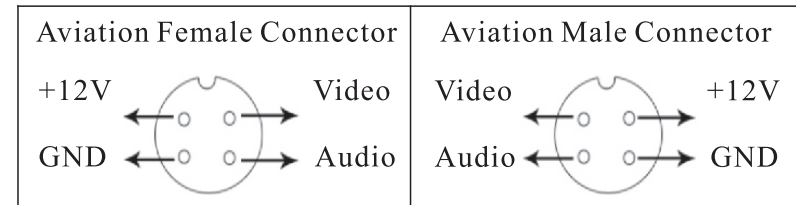
Accessories: Power cable 1PCS

Bracket 1PCS

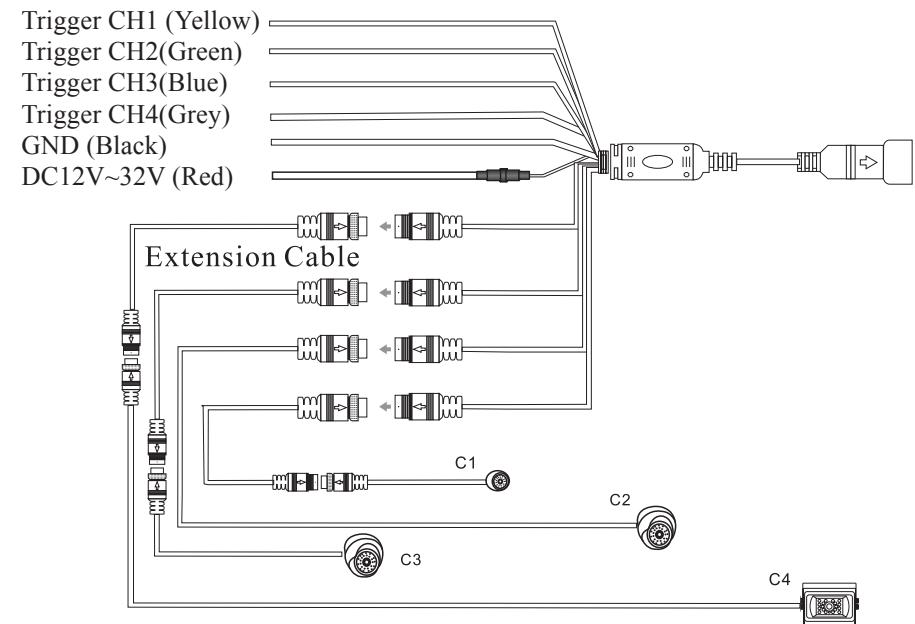
Remote Control 1PCS

Manual 1 PCS

Wiring Diagram



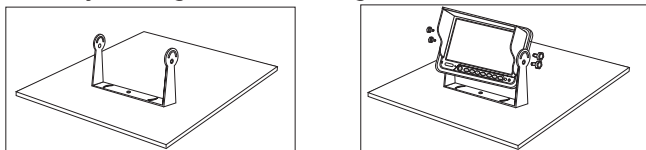
Aviation Connector:



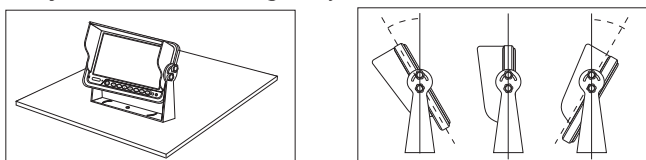
Bracket Installation

1. U-Bracket Installation

1) Use the screw fixed the U-bracket. Put the monitor into the bracket, adjust angle and locking it.



2) Finished the installation. Adjust the angle forward 30° to backward 30°. User can adjust a suitable angle by oneself.



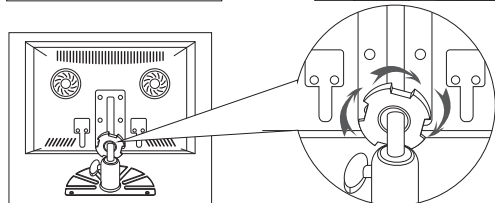
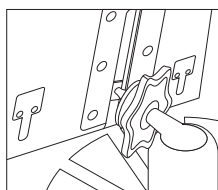
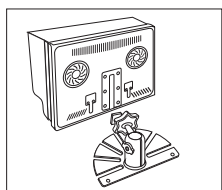
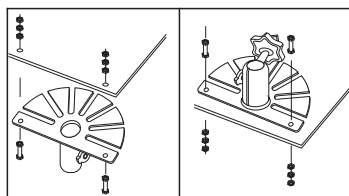
2. Plastic/Metal Bracket Installation

1) Firstly fixed the bracket via the screws, the screws of the top need lock to nut of under.

2) Secondly put the metal buckle piece on the top of the fan-shaped bracket into the notch at the back of the monitor.

3) Move the bracket to the proper location.

4) Screw down the nut of bracket, until the monitor fastening.



OSD Menu Instructions

Press “MENU”, the screen will show “SETTINGS”, Press “MENU” again, Exit. Press “▼▲” to U/D to select other feature. Press “◀▶” to adjust parameter. Press “MENU”, the screen will show pictures as below:

✕ SETTINGS	
PICTURE	▶
ROTATE	04
BLUE	ON
AUTO CYCLE	OFF
AUTO DIM	OFF
LANGUAGE	ENGLISH
ACC DELAY	▶
GUIDE LINE	▶
VIDEO ROTATE	▶
DEFAULT SETTING	▶
VERSION	202512005

Picture: Can set each CH: Brightness, Color, Contrast

Rotate: Whole quad image rotate

Blue Screen: Blue screen when no signal input

Auto Cycle: Image play in a loop

AUTO DIM: Adjust the monitor brightness according to the light brightness

Language: English/Chinese etc

ACC Delay: Reversing delay time 0~20s optional

Guide Line: Can set each CH guide line ON/OFF

VIDEO ROTATE: Each CH turn U/D/R/L

Version :Software Version