



Standtop Technology Group Co.,Limited
Shenzhen Standtop Electronics Technology Co.,Ltd
Tel:+86-755-27322079
WhatsApp/Wechat:+86 13826556522
E-mail: sales@standtop.com
Https://www.standtop.com
Address: Room 408, building A,Kaihuimao industrial park, Liyuan road,
Fuhai,Baoan District, Shenzhen,518103,China



WhatsApp



Wechat

Company >>>

Standtop Technology Group Co., Limited was founded in 2010, we are a professional manufacturer specializing in vehicle reversing camera systems, rearview monitors, rearview cameras, and AI blind spot detection systems. We have obtained CE, FCC, and E-Mark certifications, ensuring our products meet international quality and safety standards.

Innovation has always been at the heart of our development philosophy. With strict production management, rigorous quality inspection, competitive pricing, and reliable after-sales service, we deliver solutions trusted worldwide.

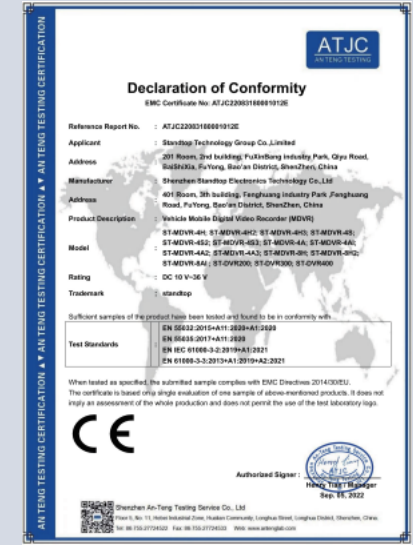
Over the years, we have successfully undertaken numerous OEM and ODM projects, exporting our products to global markets and building long-term strategic partnerships with both new and established customers.



CE Certificate

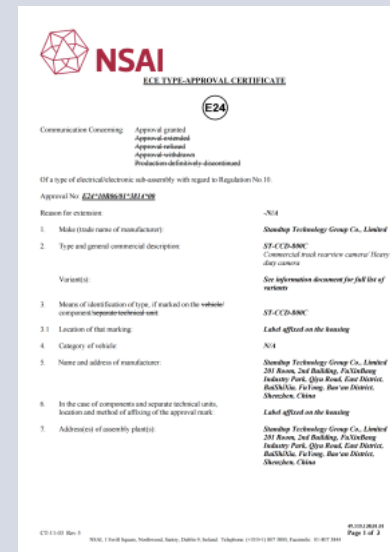


FCC Certificate

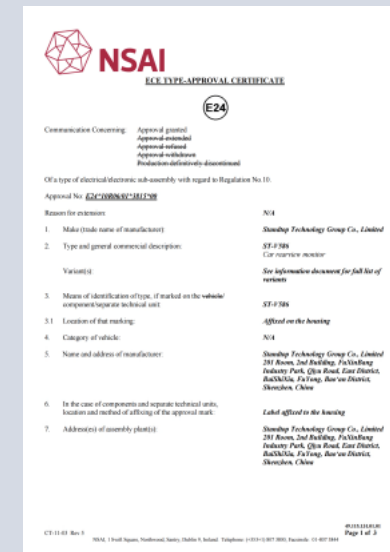


CE Certificate

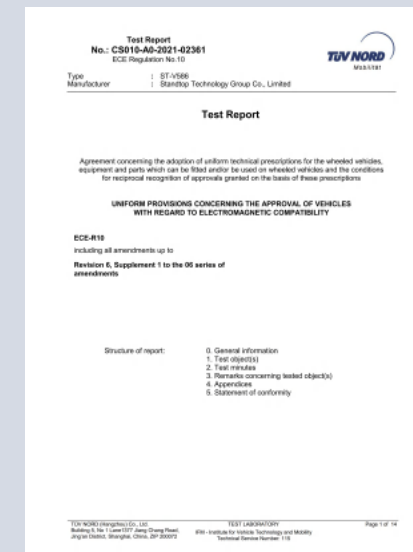
TEST EQUIPMENT



E-Mark Certificate for Camera

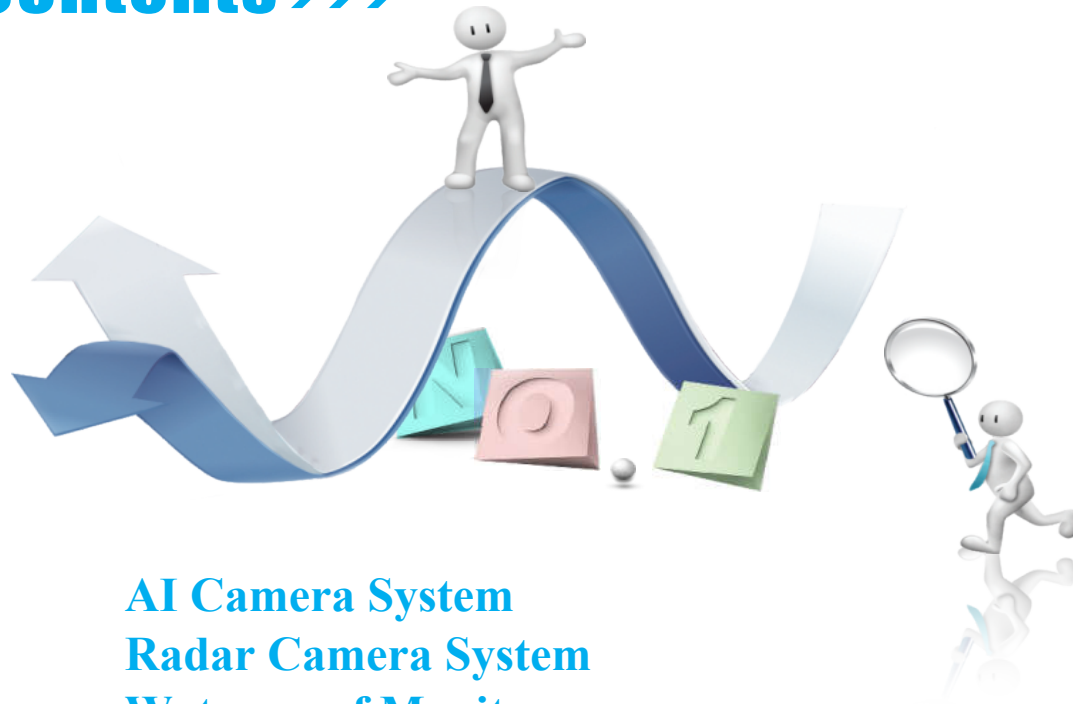


E-Mark Certificate for Monitor



TUV Test Report

Contents >>>



- AI Camera System
- Radar Camera System
- Waterproof Monitors
- Wired Camera kits
- Wireless Camera Kits
- Mirror Monitors
- AHD Rearview Monitors
- AHD Rear view Cameras
- Explosion Proof Cameras
- Starlight AHD Cameras
- IPC Cameras
- Rear view CCD Cameras
- Car Mini Reverse Cameras
- Brake Light Cameras
- Car Bracket
- Car Cable

The ST-777AI PRO is an all-in-one active safety solution engineered for high-risk industrial environments. Moving beyond standard passive monitoring, this system leverages advanced deep-learning AI to prioritize VRU protection—accurately identifying pedestrians and cyclists in the driver's blind spots to prevent accidents before they happen

With its unique integrated 3-color LED panels and high-decibel internal buzzer, it provides the driver with an intuitive, multi-layered defense against collisions—no external control box required.



ST-777AI-PRO



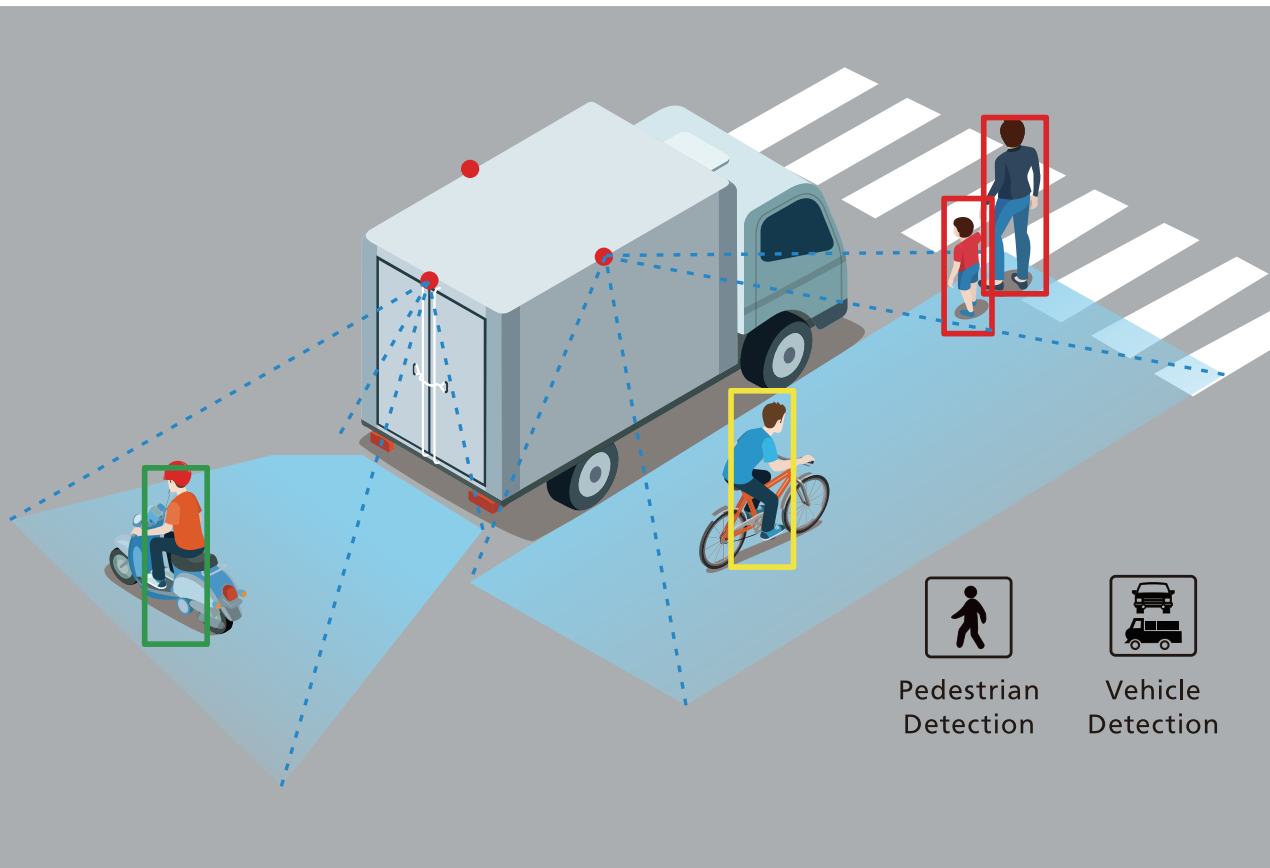
Improve Driving Safety With AI Technology

1080P AI BSD Camera

- Image sensor: 1/2.9" CMOS
- Detection distance: 0.2M-10M
- Viewing angle: 120 degree
- Power Voltage: DC 12V
- Starlight night vision
- Waterproof level: IP69K
- TV system: PAL/NTSC
- Video format: CVBS/AHD/TVI adjustable
- Connector: 4pin aviation
- AI alert sound via external buzzer
- Adjustment the detection zone and other functions via remote controller



ST-C05A-AI

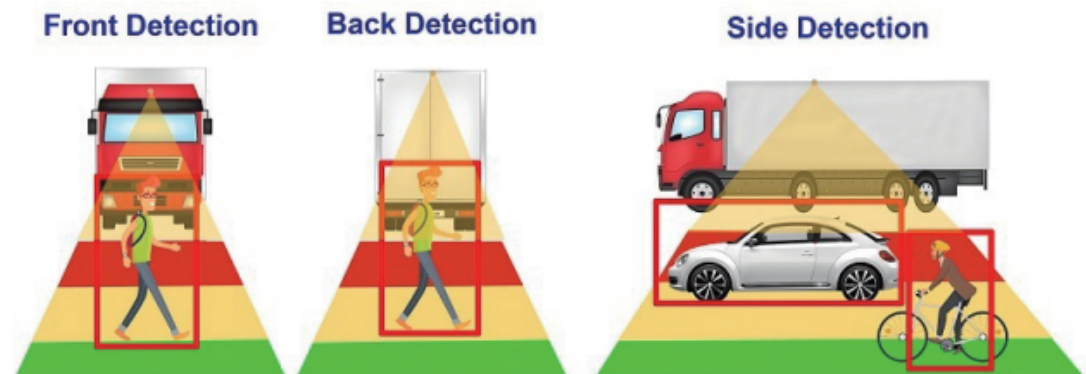


The Pedestrian and Vehicle Detection AI Camera with deep learning, designed to eliminate blind spots and prevent accidents. With AI technology, this camera identifies pedestrians and vehicles in real time, providing early warnings to drivers for safer maneuvering, and complies with UN ECE R151 & R159 (BSIS & MOIS standards)

- AHD 1080P Resolution – Crisp, high-definition video for precise monitoring
- 150° Wide Angle Lens – Covers blind spots and improves driver visibility
- Smartphone App Control – Adjust parameters, detection zones, and alarm settings easily
- IP69K Waterproof Protection – Built to withstand rain, dust, and extreme environments
- Flexible Installation – Mountable in any direction on the vehicle
- Universal Compatibility – Works with existing AHD monitors and MDVR systems
- Suitable for Commercial fleets, trucks, vans, and HGVs



ST-666AI



Active Industrial Vehicle Safety & Collision Avoidance System

This digital visual reversing radar system with Reverse Camera can get real vision the detection spot distance of driving and parking, help to avoid blind spots and secure driving and parking safety! Equipped with ultrasonic digital radar, without the need of radar host, it can directly display on the monitor the distance between the vehicle and the obstacle detected by the radar, strong anti-interference, special radar probe and equipped with a unique radar mounting bracket, high sensitivity, special connector, stable and good. professionally used for Commercial Vehicle Engineering Machinery Agricultural Vehicle Construction Vehicle etc.

- 7" HD 1080P IPS panel, 12-32V wide voltage
- HD 1080P Backup camera
- 4pcs 28mm diameter digital radar sensor, also 8-16pcs sensor optional
- Alarm distance 0.4-3m parking distance 0.4-3m can be set
- 12 auto models choose types
- 3ways video input, 2ways trigger
- Human voice and BiBi buzzer alarm
- Display mode: Full and Down

ST-733AHD-PSS

3

2

1

<p>3 Reverse camera AHD Camera Wide angle with waterproof</p>	<p>2 7" monitor Built-in 12pcs vehicle models option Support AHD 720P/960P/1080P/CVBS mix input</p>	<p>1 Sensor Detecting distance 0.3M-3M Digital Radar Sensor Support AHD Camera input Human voice/BIBI buzzer alarm</p>
--	--	---

ST-733AHD-PSS

3-in-1 Radar Camera Collision Warning System

The 3-in-1 Radar Camera System is an advanced vehicle safety device that integrates a 1080P AHD camera, 11G millimeter wave radar and sound & light alarm into a single compact unit.

This intelligent system detects pedestrians, vehicles and obstacles around the truck in real time. When an object enters the detection area, the radar triggers both visual and audible warnings to alert the driver immediately.

At the same time, the built-in HD camera provides clear video on the monitor, allowing the driver to see the surrounding environment and react quickly.

With its integrated design and reliable performance, this radar camera system is ideal for trucks, construction vehicles, mining equipment and other heavy-duty vehicles that require enhanced safety monitoring.

ST-RCSS-001



3-in-1 Radar Camera Collision Warning System

- Image sensor: 1/2.8" CMOS
- Resolution: AHD 1080P
- Viewing angle: 160° (Horizontal)
- Power Voltage: DC 12-24V
- Waterproof level: IP68
- TV system: PAL/NTSC
- Connector: 4pin aviation
- Radar Frequency: 11GHz Millimeter-Wave
- Detection Range: 0.3 -3m
- Alarm Volume: Up to 150dB
- Visual Alert: High-Intensity Red LED Strobe
- Operating Temperature: 30°C ~ 85°C, RH 95% MAX
- Connector: 4-Pin Aviation / Custom Interface



Sound & Light alarm



Radar



Camera

ST-722WPM

7" HD 1080P Quad Waterproof Monitor
 Material of Casing: Metal
 Video format: AHD/CVBS
 Screen size: 7" IPS HD 1080P Screen
 Resolution: 1024 (W)*RGB*600(H)
 Display ratio: 16:9
 System: PAL/NTSC
 Voltage: DC 12-32V
 Waterproof Level: IP68
 Four Video AV input, 3 trigger wires
 Connector: 4pin aviation



2CH optional



Optional Bracket A



Optional Bracket B

ST-744WPM

10.1" HD 1080P Quad Waterproof Monitor
 Material of Casing: Metal
 Press button: Touch button
 Video format: AHD/CVBS
 Resolution: 1024(W)*RGB*600(H)
 Display ratio: 16:9
 System: PAL/NTSC
 Voltage: DC 9-36V
 Waterproof Level: IP69K
 Four Video AV input, 4 trigger wires
 Mount Bracket: U Shape or plate VESA are optional
 Connector: 4pin aviation



2CH optional



Optional Bracket

ST-1017WPM

10.1" HD 1080P Quad Waterproof Monitor
 Material of Casing: Metal
 Press button: Touch button
 Video format: AHD/CVBS
 Resolution: 1024(W)*RGB*600(H)
 Display ratio: 16:9
 System: PAL/NTSC
 Voltage: DC 9-36V
 Waterproof Level: IP69K
 Four Video AV input, 3 trigger wires
 Video Recording: Up to 512G SD card
 Mount Bracket: U-Shaped Bracket
 Connector: 4pin aviation



ST-799AHD-S



Screen size: 7" IPS HD 1080P
 AHD and CVBS Signal Hybrid
 Resolution: 1024(W)*600(H)*RGB
 2 Channel input
 System: PAL&NTSC
 Certificate: CE & ECE R10
 Power Voltage:DC 9-36V

AHD 1080P Camera
 1/2.9" CMOS or AHD sensor
 Resolution: 1920*1080,2Mpx
 Viewing Angle:120 Degree
 Power supply:DC 12V
 Certificate: CE & ECE R10

ST-766RVS



Screen size: 7" IPS HD 1080P
 AHD and CVBS Signal Hybrid
 Resolution: 1024(W)*600(H)*RGB
 2 Channel input
 System: PAL&NTSC
 Power Voltage:DC 9-36V

HD 1080P Double Lens Camera
 Image Sensor: 1/2.8" Sony IMX307
 Resolution: 1920(H) x 1080(V)
 Rear View Camera Angle: 120°(H)
 Reverse Camera Angle: 150°(H)
 Video Format: PAL/NTSC
 Waterproof level: IP68
 Power supply: DC12V
 Connector: 4pin aviation

ST-123EMM-S



Screen size: 12.3" IPS HD 1080P
 AHD and CVBS Signal Hybrid
 Resolution: 1024(W)*600(H)*RGB
 2 Channel input
 System: PAL&NTSC
 Power Voltage:DC 9-36V

HD 1080P Double Lens Camera
 Image Sensor: 1/2.9" CMOS
 Resolution: 1920(H) x 1080(V)
 Rear View Camera Angle: 90°(H)
 Reverse Camera Angle: 150°(H)
 IR Leds: 10 (5 per camera)pcs
 Video Format: PAL/NTSC
 Waterproof level: IP68
 Power supply: DC12V
 Connector: 4pin aviation or RCA Phono

ST-533WRS



5" Wireless Magnetic Hitch Camera System
 2.4G Digital Wireless Monitor Specs:
 Screen size: 5" IPS AHD 1080P
 Resolution: 800(W)*480(H)*RGB
 Screen ratio:16:9
 Power Supply:DC 12V
 Up to 2 wireless cameras

Wireless Camera Specs:
 Image Sensor:1/2.7" CMOS Sensor
 Resolution: 1280(H)*720(V)
 Viewing Angle: 150°
 Power voltage: 5-12V
 Waterproof level: IP68
 Battery Capacity: 2800mA
 Transmission Distance: 164ft/50m in open area
 Working Time(IR on): 8h(6h)
 Charging time: 4h
 External DC power supply:5-24V
 Connector Type: USB

ST-799WRS-4



7" Quad Wireless Rearview Monitor Kit with DVR
 2.4G Digital Wireless Monitor Specs:
 Screen size: 7" IPS AHD 1080P
 Resolution: 1024(W)*600(H)*RGB
 Screen ratio:16:9
 Power Supply: 9-36V
 Video Decode: H.264
 Up to 4 Wireless Cameras

Wireless Camera Specs:
 Image sensor:1/3" CMOS Sensor
 Resolution: AHD 1080P
 Effective Pixels: 1920(H) x 1080(V)
 Power supply: DC 12-24V
 Waterproof Level: IP68
 Night vision: Yes
 Transmission Distance: 200M(open area)

ST-788WRS



7" Quad Wireless Mirror Monitor Kit with DVR
 2.4G Digital Wireless Monitor Specs:
 Screen size: 7" IPS AHD 1080P
 Resolution: 1024(W)*600(H)*RGB
 Screen ratio:16:9
 Power Supply: 9-36V
 Video Decode: H.264
 Up to 4 Wireless Cameras

Wireless Camera Specs:
 Image sensor:1/37" CMOS Sensor
 Resolution: AHD 1080P
 Effective Pixels: 1920(H) x 1080(V)
 Power supply: DC 12-24V
 Waterproof Level: IP68
 Night vision: Yes
 Transmission Distance: 200M(open area)

ST-722WCS



7" Dual-Split Wireless Monitoring System
2.4G Digital Wireless Monitor Specs:
Screen size: 7" IPS AHD 1080P
Resolution: 1024(W)*600(H)*RGB
Screen ratio:16:9
Power Suply: 9-36V

Wireless Camera Specs:
Image sensor:1/3" CMOS Sensor
Resolution: AHD 1080P
Effective Pixels: 1920(H) x 1080(V)
Power supply: DC 12-24V
Waterproof Level: IP68
Night vison: Yes
Transmission Distance: 200M(open area)

ST-777WCS



7" 1080P AI BSD Wireless Quad View Monitoring System
2.4G Digital Wireless Monitor Specs:
Screen size: 7" IPS AHD 1080P
Resolution: 1024(W)*600(H)*RGB
Screen ratio:16:9
Power Suply: 9-36V
Up to 4 Wireless Cameras

Wireless Camera Specs:
Image sensor:1/3" CMOS Sensor
Resolution: AHD 1080P
Effective Pixels: 1920(H) x 1080(V)
Power supply: DC 12-24V
Waterproof Level: IP68
Night vison: Yes
Transmission Distance: 200M(open area)

ST-900WCS



9" Dual-Split Wireless Monitoring System
2.4G Digital Wireless Monitor Specs:
Screen size: 9" IPS AHD 1080P
Resolution: 1024(W)*600(H)*RGB
Screen ratio:16:9
Power Suply: 9-36V

Wireless Camera Specs:
Image sensor:1/3" CMOS Sensor
Resolution: AHD 1080P
Effective Pixels: 1920(H) x 1080(V)
Power supply: DC 12-24V
Waterproof Level: IP68
Night vison: Yes
Transmission Distance: 200M(open area)

ST-TR004



AHD/TVI/CVI/AVBS wireless transmitter and receiver
TX video input:AHD/TVI/CVI/AVBS
RX video output:720P(AHD)
RX Receiver power supply: 12-24V DC
Wireless spectrum:2.4G
Transmission distance:500M
Boot time:2S
Transmission power:12Mbps
Operating frequency range:2400-2483.5MHz
Waterproof: IP68
Time of delay:90-120ms
Housing:Aluminium alloy
Operating temperature: -20°C~70°C
Storage temperature:-30°C~80°C

ST-799M



7" IPS HD 1080P Mirror Monitor
Resolution:1024(W)*600(H)*RGB
Video Format: AHD/CVBS Hybrid
Power Voltage:DC 9-36V
Video input: 2 Channels
TV system: PAL/NTSC
Screen ratio:16:9
Connector: 4pin aviator or RCA
Mounting method: Clip on or Mirror Stalk

ST-799Q



7" IPS HD 1080P Quad Mirror Monitor
Resolution:1024(W)*600(H)*RGB
Video Format: AHD/CVBS Hybrid
Power Voltage:DC 9-36V
Video input: 4 Channels
Trigger: 4 trigger wires
Video recording function: Optional
TV system: PAL/NTSC
Screen ratio:16:9
Connector: 4pin aviator or RCA

ST-588TM-HDS

7" IPS HD 1080P OE Type Mirror Monitor
Resolution:1024(W)*600(H)*RGB
Video Format: AHD/CVBS Hybrid
Power Voltage:DC 9-36V
Video input: 2 Channels
TV system: PAL/NTSC
Screen ratio:16:9
Connector: 4pin aviator or RCA
Certificate: CE & ECE R10



ST-588TM-AHD



7" IPS HD 1080P Mirror Monitor
Resolution:1024(W)*600(H)*RGB
Video Format: AHD/CVBS Hybrid
Power Voltage:DC 9-36V
Video input: 2 Channels
TV system: PAL/NTSC
Screen ratio:16:9
Connector: 4pin aviator or RCA
Certificate: CE & ECE R10

ST-700MM-6C



7" AHD Mirror Monitor 6 Channel DVR
Resolution:1024(W)*600(H)*RGB
Video Format: AHD/CVBS Hybrid
Power Voltage:DC 9-36V
Video input: 6 Channels
TV system: PAL/NTSC
Screen ratio:16:9
Video record: Optional, Up to 256GB SD carder
Connector: 4pin aviator or RCA

ST-500M-AHD



5" IPS HD Rearview Monitor
 Resolution:800(W)*480(H)*RGB
 Video Format: AHD/CVBS Hybrid
 Power Voltage:DC 12-24V
 Video input: 3 Channels
 TV system: PAL/NTSC
 Screen ratio:16:9
 Connector: 4pin aviator or RCA
 Certificate: CE & ECE R10

ST-799M-AHD



7" IPS HD 1080P Rearview Monitor
 Resolution:1024(W)*600(H)*RGB
 Video Format: AHD/CVBS Hybrid
 Power Voltage:DC 9-36V
 Video input: 2 Channels
 TV system: PAL/NTSC
 Screen ratio:16:9
 Connector: 4pin aviator or RCA
 Certificate: CE & ECE R10

ST-101Q-AHD



10.1" HD 1080P Quad Monitor
 Resolution:1024(W)*600(H)*RGB
 Video Format: AHD/CVBS Hybrid
 Power Voltage: DC 12-24V
 Video input: 4 Channels
 TV system: PAL/NTSC
 Screen ratio:16:9
 Connector: 4pin aviator or RCA

ST-101Q2-AHD



10.1" HD 1080P Quad Monitor
 Resolution:1024(W)*600(H)*RGB
 Video Format: AHD/CVBS Hybrid
 Power Voltage: DC 9-36V
 Video input: 4 Channels
 TV system: PAL/NTSC
 Screen ratio: 16:9
 Connector: 4pin aviator or RCA

ST-799AHD-2P



7" IPS HD 1080P 2 Split Monitor
 Resolution:1024(W)*600(H)*RGB
 Video Format: AHD/CVBS Hybrid
 Power Voltage:DC 9-36V
 Video input: 2 Channels
 TV system: PAL/NTSC
 Screen ratio:16:9
 Video record:optional,up to 256G SD card
 Connector: 4pin aviator or RCA
 Certificate: CE & ECE R10

ST-799Q-AHD



7" IPS HD 1080P Quad Monitor
 Resolution:1024(W)*600(H)*RGB
 Video Format: AHD/CVBS Hybrid
 Power Voltage:DC 9-36V
 Video input: 4 Channels
 TV system: PAL/NTSC
 Screen ratio:16:9
 Video record:optional,up to 256G SD card
 Connector: 4pin aviator or RCA
 Certificate: CE & ECE R10

ST-702MM



7" HD Digital Side Mirror System with DVR
 Resolution:1024(W)*600(H)*RGB
 Video Format: AHD/CVBS Hybrid
 Power Voltage: DC 12-24V
 Video input: 2 Channels
 TV system: PAL/NTSC
 Screen ratio: 16:9
 Video record: Up to 256G SD card
 Connector: 4pin aviator or RCA

ST-799RVM-6C



7" HD 1080P Rearview Monitor 6 Channel DVR
 Resolution:1024(W)*600(H)*RGB
 Video Format: AHD/CVBS Hybrid
 Power Voltage: DC 9-36V
 Video input:6 Channels
 TV system: PAL/NTSC
 Screen ratio: 16:9
 Video record: Up to 256G SD card
 Connector: 4pin aviator or RCA

ST-800A



- Image sensor: 1/2.9" GC2053
- Resolution: 1920(H) x 1080(V)
- Viewing angle: 120 Degree
- Power Voltage: DC 12V
- IR Leds: 18pcs
- Waterproof Rating: IP68
- Certificates: CE & ECE R10

ST-TW-C09A



- HD 1080P Twin Lens Camera
- Image sensor: 1/2.9" GC2053
 - Resolution: 1920(H) x 1080(V)
 - Viewing angle: 120 Degree
 - Power Voltage: DC 12V
 - IR Leds: 12pcs
 - Waterproof Rating: IP68
 - Certificates: CE & ECE R10

ST-C05A



- Image sensor: 1/2.9" GC2053
- Resolution: 1920(H) x 1080(V)
- Viewing angle: 120 Degree
- Power Voltage: DC 12V
- IR Leds: 18pcs
- Waterproof Rating: IP68
- Certificates: CE & ECE R10

ST-WLC-8A



- HD 1080P Square Work Lamp Camera
- Image sensor: 1/2.9" GC2053
 - Resolution: 1920(H) x 1080(V)
 - Viewing angle: 150 Degree(H)
 - Camera Power voltage: DC 12V
 - Work Lamp Power voltage:DC 12-24V
 - TV system: PAL/NTSC
 - LED color temperature/light: 6000K/60 degree flood light
 - IR Leds: 8pcs
 - Waterproof Rating: IP69K

ST-CMOS-8IR



- HD 1080P Round Work Lamp Camera
- Image sensor: 1/2.9" GC2053
 - Resolution: 1920(H) x 1080(V)
 - Viewing angle: 120 Degree
 - Camera Power voltage: DC 12V
 - Work Lamp Power voltage:DC 12-24V
 - TV system: PAL/NTSC
 - LED color temperature: 3000K/4500K/6000K adjustable
 - Light: 60 degree flood light
 - IR Leds: 8pcs
 - Waterproof Rating: IP69K

ST-C04A



- Image sensor: 1/2.9" GC2053
- Resolution: 1920(H) x 1080(V)
- Viewing angle: 120 Degree
- Power Voltage: DC 12V
- IR Leds: 10pcs
- Waterproof Rating: IP68
- Certificates: CE & ECE R10

ST-LPC-6

HD 1080P License Plate Camera

- Image sensor: 1/2.9" CMOS
- Resolution: 1920(H) x 1080(V)
- Viewing angle: 120 Degree
- Power Voltage: DC 12V
- IR Leds: 5pcs
- Waterproof Rating: IP68



ST-C03HDC

Medium Size Dome Camera

- Image sensor: 1/2.9" GC2053
- Resolution: 1920(H) x 1080(V)
- Viewing angle: 120 Degree
- Power Voltage: DC 12V
- IR Leds: 10pcs
- Waterproof Rating: IP68



ST-C31A



1080P Mini Rear View Camera

- Image Sensor: 1/2.9" CMOS
- Resolution: 1920(H) x 1080(V)
- Angle View: 150°(H)
- IR Leds: 4pcs
- Video Format: PAL/NTSC
- Waterproof level: IP68
- Power supply: DC12V
- Connector: 4pin aviation,4pin mini din, RCA Phono

ST-C06A



- HD 1080P Side Camera
- Image sensor: 1/2.9" CMOS
- Resolution: 1920(H) x 1080(V)
- Viewing angle: 150 Degree
- TV system: PAL/NTSC
- Power Voltage: DC 12V
- WDR function: Optional
- Waterproof Level: IP68
- Connector: 4pin aviation

ST-C113FVC



HD 1080P WDR Forward Facing Camera

- Image sensor: 1/2.9" GC2053
- Resolution: 1920(H) x 1080(V)
- Viewing angle: 120 Degree
- Power Voltage: DC 12V
- Waterproof Rating: IP67
- Connector: 4pin aviation

ST-C03A



- Image sensor: 1/2.9" GC2053
- Resolution: 1920(H) x 1080(V)
- Viewing angle: 120 Degree
- Power Voltage: DC 12V
- IR Leds: 10pcs
- Waterproof Rating: IP68
- Certificates: CE & ECE R10

ST-C04HDC



HD 1080P Medium Size Dome Camera

- Image sensor: 1/2.9" GC2053
- Resolution: 1920(H) x 1080(V)
- Viewing angle: 120 Degree
- Power Voltage: DC 12V
- IR Leds: 12pcs
- Audio: optional
- Waterproof Rating: IP68

ST-C07A



HD 1080P Side View Ball Camera

- Image sensor: 1/2.9" GC2053
- Resolution: 1920(H) x 1080(V)
- Viewing angle: 120 Degree
- Power voltage: DC 12V
- Night Vision,with mount bracket
- Waterproof Rating: IP68

AHD Rear view Cameras

ST-C28A



- HD 1080P Double Lens Camera
- Image Sensor: 1/2.8" or 1/2.9" CMOS
 - Resolution: 1920(H) x 1080(V)
 - Rear View Camera Angle: 120°(H)
 - Reverse Camera Angle: 150°(H)
 - Waterproof level: IP68
 - Power supply: DC12V
 - Connector: 4pin aviation or RCA

ST-C30D



- HD 1080P Double Lens Camera
- Image Sensor: 1/2.9" CMOS
 - Resolution: 1920(H) x 1080(V)
 - Rear View Camera Angle: 90°(H)
 - Reverse Camera Angle: 150°(H)
 - IR Leds: 6pcs
 - Waterproof level: IP68
 - Power supply: DC12V
 - Connector: 4pin aviation or RCA

ST-39DLC



- HD 1080P Double Lens Camera
- Image Sensor: 1/2.8" or 1/2.9" CMOS
 - Resolution: 1920(H) x 1080(V)
 - Rear View Camera Angle: 90°(H)
 - Reverse Camera Angle: 150°(H)
 - IR Leds: 10 (5 per camera)pcs
 - Waterproof level: IP68
 - Power supply: DC12V
 - Connector: 4pin aviation or RCA

Starlight AHD Cameras

ST- C05A-S



- Starlight Sony AHD 1080P Camera
- Image sensor: 1/2.8" CMOS or Sony IMX662
 - Resolution: 1920(H) x 1080(V)
 - Viewing angle: 120 Degree(H)
 - TV system: PAL/NTSC
 - Power Voltage: DC 12V
 - WDR function: Optional
 - Waterproof Level: IP68
 - Connector: 4pin aviation

ST-C22A



- Starlight Sony AHD 1080P Camera
- Image sensor: 1/2.8" CMOS
 - Resolution: 1920(H) x 1080(V)
 - Viewing angle: 150 Degree(H)
 - TV system: PAL/NTSC
 - Power Voltage: DC 12V
 - WDR function: Optional
 - Waterproof Level: IP68
 - Connector: 4pin aviation

ST- C29A



- Starlight HD 1080P Rear Camera
- Image sensor: 1/2.9" CMOS
 - Resolution: 1920(H) x 1080(V)
 - Viewing angle: 95 or 140 Degree(H)
 - Waterproof Level: IP68
 - TV system: PAL/NTSC
 - Power Voltage: DC 12V
 - Connector: 4pin aviation

Explosion Proof Cameras

ST-845RC-EX



- Heavy Duty Explosion Proof Camera
- Camera casing: Stainless steel
 - Image Sensor: 1/2.8" or 1/2.9" CMOS
 - Resolution: 1920(H) x 1080(V)
 - Viewing angle: 120 Degree
 - Power Voltage: DC 12V
 - IR Leds: 4pcs 850Leds
 - Waterproof Level: IP69K
 - Connector: 4pin aviation

ST-866RC



- Heavy Duty Explosion Proof Camera
- Camera casing: Stainless steel
 - Image sensor: 1/2.8" Sony IMX662
 - Resolution: 1920(H) x 1080(V)
 - Viewing angle: 120 Degree
 - Power Voltage: DC 12V
 - Waterproof Level: IP69K
 - Connector: 4pin aviation

ST-875RC-EX



- Heavy Duty Explosion Proof Camera
- Camera casing: Aluminum Alloy
 - Image Sensor: 1/2.9" CMOS
 - Resolution: 1920(H) x 1080(V)
 - Viewing angle: 120 Degree
 - Power Voltage: DC 12V
 - IR Leds: 36pcs 850Leds
 - Waterproof Level: IP69K
 - Connector: 4pin aviation

IPC Cameras

ST-03HDC-IPC



- IPC Internal Dome Camera
- Image sensor: 1/3" CMOS
 - Resolution: AHD 1080P
 - Viewing angle: 80 Degree
 - Power Voltage: DC 12V
 - Waterproof Level: IP67
 - Night vision: 5M
 - Connector: 6pin aviation
 - Adopts high-definition solution with high color reproduction
 - Use high-definition network modules with standard ONVIF protocol, with strong compatibility
 - Can be equipped with audio, Person detection alarm (not equipped by default)
 - It designed for use with mobile DVR solutions

ST-C114-IPC



- IPC Front Windscreen Camera
- Image sensor: 1/3" CMOS
 - Resolution: AHD 1080P
 - Viewing angle: 80 Degree
 - Power Voltage: DC 12V
 - Waterproof Level: IP67
 - Night vision: 5M
 - Connector: 6pin aviation
 - Adopts high-definition solution with high color reproduction
 - Use high-definition network modules with standard ONVIF protocol, with strong compatibility
 - Can be equipped with audio, Person detection alarm (not equipped by default)
 - It designed for use with mobile DVR solutions

ST-C113-IPC



- IPC Forward Facing Camera
- Image sensor: 1/3" CMOS
 - Resolution: AHD 1080P
 - Viewing angle: 80 Degree
 - Power Voltage: DC 12V
 - Waterproof Level: IP67
 - Night vision: 5M
 - Connector: 6pin aviation
 - Adopts high-definition solution with high color reproduction
 - Use high-definition network modules with standard ONVIF protocol, with strong compatibility
 - Can be equipped with audio, Person detection alarm (not equipped by default)
 - It designed for use with mobile DVR solutions

Rear view CCD Cameras

ST-CCD-TF



- Image sensor: 1/3" Sony CCD sensor
- Resolution: 700TVL
- Viewing angle: 120 Degree
- Power Voltage: DC 12V
- IR Leds: 10pcs
- TV system: PAL/NTSC
- Waterproof Rating: IP68
- Certificates: CE & ECE R10

ST-CCD-800C



- Image sensor: 1/3" Sony CCD sensor
- Resolution: 700TVL
- Viewing angle: 120 Degree
- Power Voltage: DC 12V
- TV system: PAL/NTSC
- IR Leds: 18pcs
- Waterproof Rating: IP68
- Certificates: CE & ECE R10

ST-CMOS-778



- Image sensor: 1/3" CMOS
- Resolution: 700TVL
- Viewing angle: 150 Degree
- Power Voltage: DC 12V
- TV system: PAL/NTSC
- Waterproof Rating: IP68
- Certificates: CE & ECE R10

Brake Light Reversing Cameras

ST-1722FD



- For FIAT Ducato 2014/Citroen Jumper/Peugeot Boxer
- Image sensor:1/3" CMOS or CCD Sensor
 - AHD or CCD Optional
 - Resolution: AHD 1080P/700TVL
 - TV System: PAL/NTSC
 - Viewing Angle:120 Degree
 - Power supply: DC 12V
 - Waterproof Level: IP68
 - IR Led:6pcs
 - Built-in brake lamp
 - Connector: 4pin aviation or RCA
 - Operation Temperature: -20°C~70°C

ST-0615FD



LVDS optional



- For FIAT Ducato 2006-2015/Citroen Jumper/Peugeot Box
- Image sensor:1/3" CMOS or CCD Sensor
 - AHD or CCD Optional
 - Resolution: AHD 1080P/700TVL
 - TV System: PAL/NTSC
 - Viewing Angle:120 Degree
 - Power supply: DC 12V
 - Waterproof Level: IP68
 - IR Led:6pcs
 - Built-in brake lamp
 - Connector: 4pin aviation or RCA
 - Operation Temperature: -20°C~70°C

ST-1766S



- Brake Light Reversing Camera For MB Sprinter 2006-2018/VW Crafter 2007-2016
- Image sensor:1/3" CMOS or CCD Sensor
 - AHD or CCD Optional
 - Resolution: AHD 1080P/700TVL
 - TV System: PAL/NTSC
 - Viewing Angle:120 Degree
 - Power supply: DC 12V
 - Waterproof Level: IP68
 - IR Led:6pcs
 - Connector: 4pin aviation or RCA
 - Operation Temperature: -20°C~70°C

Car Mini Reverse Cameras

ST-CMOS-669



- Image sensor: 1/4" CMOS sensor
- Resolution: 700TVL
- Viewing angle: 120 Degree
- Power Voltage: DC 12V
- Waterproof Rating: IP68
- Parking line on/off wires:optional
- Mirror on/off wires: optional
- Certificates: CE & ECE R10

ST-CMOS-778



- LVDS Camera for Fiat Ducato 8/Fiat Ducato 2021 For 7" Uconnect Monitor
- Image sensor: 1/3" H68 CMOS
 - Resolution: AHD 960P
 - Power supply: DC 12V
 - Viewing angle:145 degree(H)
 - Waterproof level: IP68
 - Connector:Fakra
 - Extension cable: 6-15M optional
 - Certificates: CE & ECE R10

ST-CMOS-776



- Image sensor: 1/4" CMOS sensor
- Resolution: 600TVL
- Viewing angle: 120 Degree
- Power Voltage: DC 12V
- Waterproof Rating: IP68
- Parking line on/off wires:optional
- Mirror on/off wires: optional
- WDR function: optional
- Camera housing colors: Black or Silver
- Certificates: CE & ECE R10

Car Bracket

ST-590BR



ST-589BR



ST-591BR



ST-592BR



Car Cable

ST-FAK-C



Fakra Connector Cable
6M~15M Length optional
Female or Male optional

ST-15RCAMC



15M 4 pin male to RCA

ST-10MC



5M-20M Length optional

ST-801TL



Medium duty trailer link
20M+5M+Coiled cable